

COMITROL® PROCESSOR MODEL 3600F

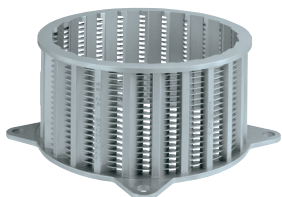
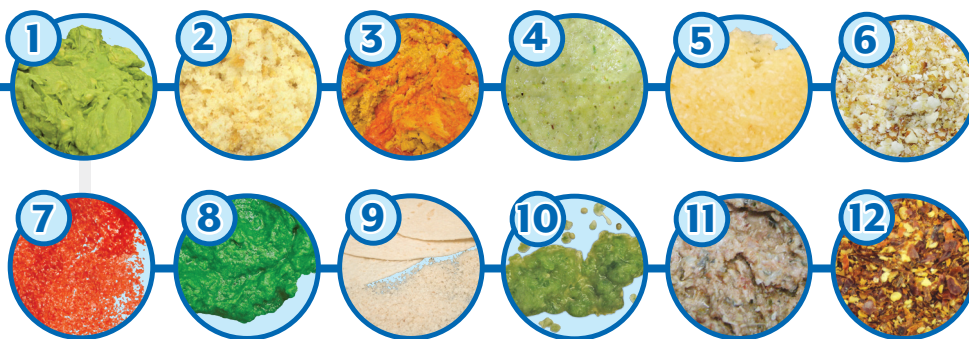
SMALL VOLUME TO HIGH CAPACITY ENVIRONMENTS

The Model 3600F is popular in both small volume and large-scale production environments. The 3600F is equipped with a 10 HP (7.5 kW) motor and a screw feeder controlled by a VFD (variable frequency drive) for positive feeding assistance. This machine is commonly sold as a precutter used in conjunction with the Comitrol Processor Model 1700.

Common applications include rework of bakery items, beef/poultry/seafood and byproducts, and vegetable/fruit reductions. Stainless steel construction ensures maximum durability and sanitation. The machine features continuous operation for uninterrupted production, and is designed for easy cleanup and maintenance. Product input is dependent on the style of reduction head, impeller selection, and spacing within the head. Generally, maximum input size in any dimension should not exceed 2-1/2" (63.5 mm).



TYPES OF CUTS

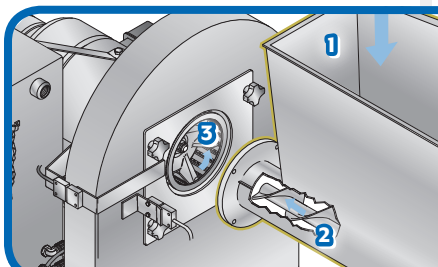


Cutting Head

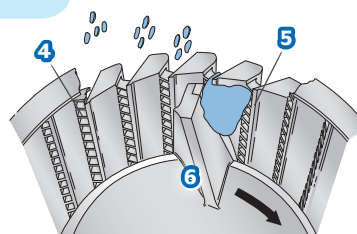
Utilizes 6" (152.4 mm) diameter Cutting Heads paired with a variety of impellers to produce coarse to fine reductions.

- | | | | |
|----------|-----------------------------------|-----------|-------------------------------|
| 1 | AVOCADO PASTE | 7 | POLYMER |
| 2 | BREAD GRANULATION | 8 | KALE |
| 3 | COARSE HUMMUS | 9 | FLOUR TORTILLA SHELL |
| 4 | COARSE PINEAPPLE PUREE | 10 | TOMATILLO/ ONION PUREE |
| 5 | GARLIC | 11 | FISH WASTE |
| 6 | GRANOLA/FRUIT/ NUT MIXTURE | 12 | DRIED CHILI PEPPERS |

CUTTING OVERVIEW



1. Feed Hopper
2. Screw Feeder
3. Cutting Head
4. Horizontal Separators
5. Vertical Knives
6. Impeller



If your product application is not mentioned on this page, contact your local Urschel representative to determine the most effective solution to your size reduction needs.

COMITROL[®] PROCESSOR MODEL 3600F

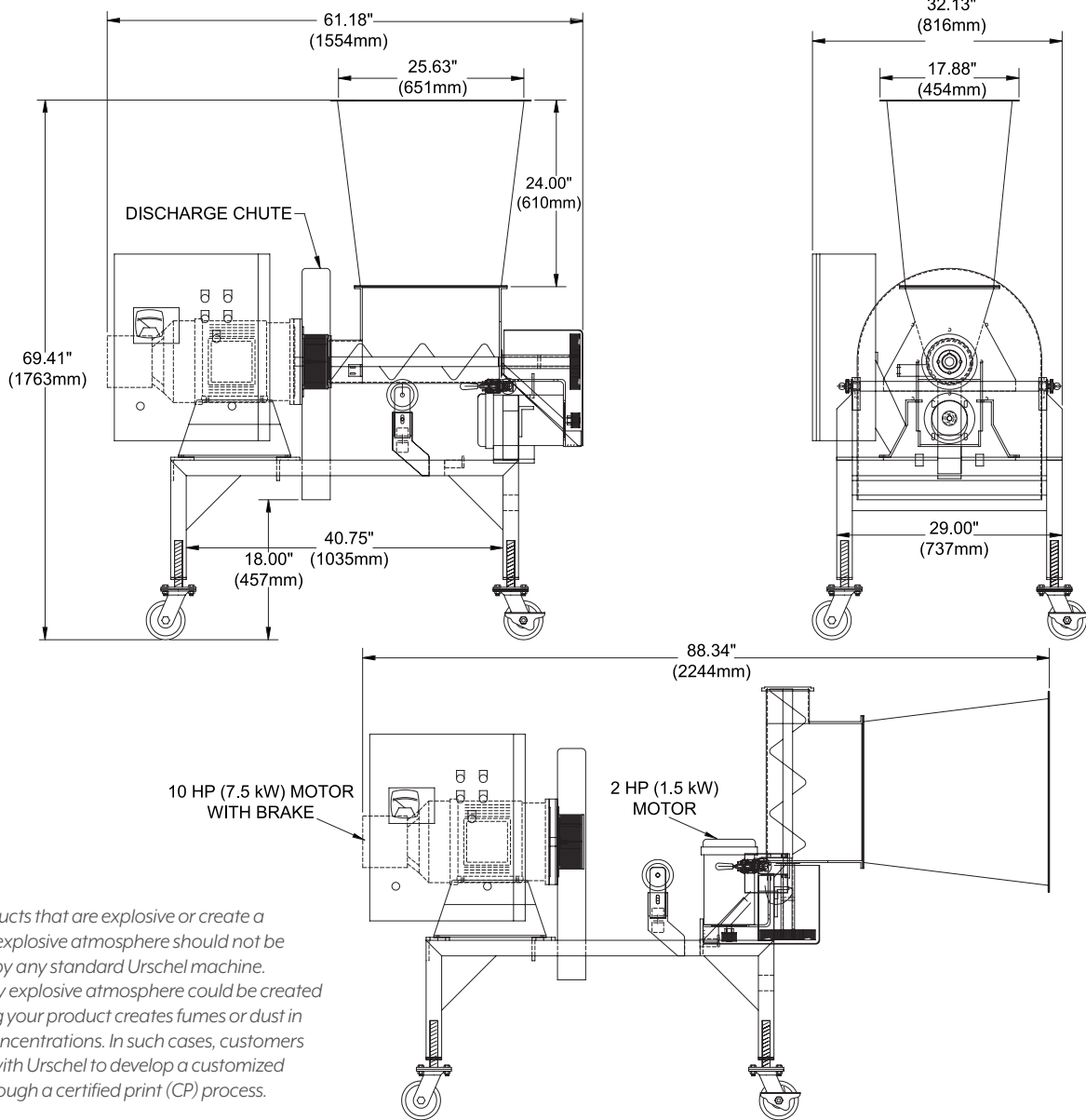
Measurements and weights may vary depending on machine configuration.

Length:..... 61.18" (1554 mm)
Width:..... 32.13" (816 mm)
Height:..... 69.41" (1763 mm)
Net Weight: 800 lb (363 kg)

Motors:..... Impeller – 10 HP (7.5 kW)
 Screw Feeder – 2 HP (1.5 kW)



SPECIFICATIONS & DIMENSIONS



NOTE: Products that are explosive or create a potentially explosive atmosphere should not be processed by any standard Urschel machine. A potentially explosive atmosphere could be created if processing your product creates fumes or dust in sufficient concentrations. In such cases, customers may work with Urschel to develop a customized solution through a certified print (CP) process.

PUT URSCHEL TO THE TEST Schedule a comprehensive, no-obligation test cut of your product.

COMITROL[®]
 BY URSCHEL THE SIZE REDUCTION SPECIALISTS



URSCHEL[®]
 The Global Leader in Food Cutting Technology

www.urschel.com | ✉ info@urschel.com